

# CLARIFICATION/ NOTIFICATION

PROJECT: Stewart Parkway Tennis & Pickleball Courts  
PROJECT #:23GR23



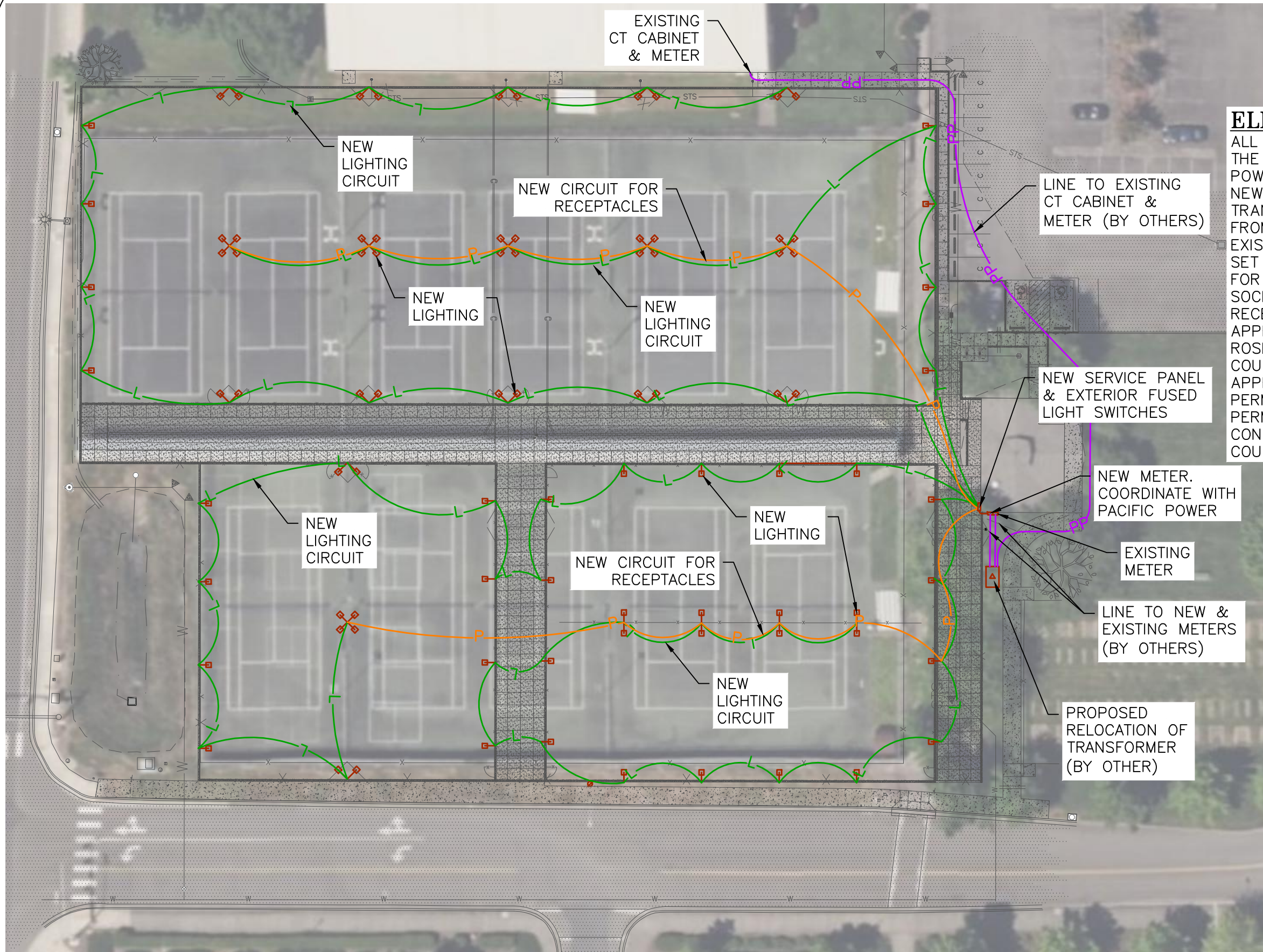
Date: March 14, 2025  
Clarification No. 2

From: **i.e. Engineering, Inc.**  
**809 SE Pine Street**  
**Roseburg, OR 97470**

- Item #1 Alternate lighting systems will be allowed if the GC wants to use a different manufacturer and supplier, but if that is the case it will be the GC's responsibility to meet or exceed the USTA Class 2 standards and provide documentation as needed to verify that standard is met. Alternative lighting plans will be submitted by the City to the USTA for review and approval. The City will not review alternative lighting plans for approval until after the bid has been awarded and the GC selected. The successful bidder will be held in tight conformance to the manual stated above and the requirements for lighting in that manual. Bidders using alternate lighting systems will accept all risks associated with that decision and will not be awarded additional funds to pay for the full lighting if their alternative lighting plan is not approved.
- Item #2 The court light mounting arms shown on previous plans were incorrect. See revised Light Pole Notes on Sheet C6 and see revised detail 3/SD.5 on sheet SD.5.
- Item #3 Detail 4/SD.5 on Sheet SD.5 has been revised to show the correct Part # and Power. The correct Part # is EL-NED-400(TC), the correct Power is 400W.
- Item #4 Court lighting shall be controlled by wireless controls. The following package system is included to show the desired system. Alternate systems will be considered in a similar manner as the lighting system.
- Install E-LITE iNET Wireless based public communication and intelligent control system featured with mesh networking technology.

Copy To: File

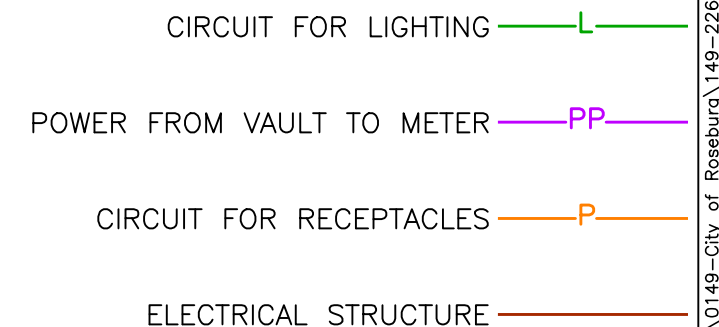
SIGNED: \_\_\_\_\_



# PROPOSED TENNIS & PICKLEBALL COURTS ELECTRICAL SKETCH

## ELECTRICAL NOTE:

ALL ELECTRICAL DESIGN IS TO BE PROVIDED BY THE GC ON THIS PROJECT AS NEEDED TO PROVIDE POWER FROM THE NEW METER SOCKET TO THE NEW COURT LIGHTS AND GFI RECEPTACLES. THE TRANSFORMER AND UNDERGROUND POWER LINES FROM THE TRANSFORMER TO THE NEW AND EXISTING METERS WILL ALL BE RELOCATED AND SET BY PACIFIC POWER. SUBMITTALS AND PLANS FOR THE ELECTRICAL WORK FROM THE METER SOCKET TO THE COURT LIGHTS AND GFI RECEPTACLES SHALL BE PROVIDED TO AND APPROVED BY THE ENGINEER AND CITY OF ROSEBURG PRIOR TO SUBMITTAL TO THE DOUGLAS COUNTY BUILDING DEPARTMENT FOR REVIEW, APPROVAL, AND THE PULLING OF THE ELECTRICAL PERMITS. ALL OF THIS WORK, INCLUDING PERMITTING FEES AND RELATED COSTS, SHALL BE CONSIDERED INCIDENTAL TO THE COST OF THE COURT LIGHTING.



0' 20' 40' 80'  
SCALE: 1"=40'

**ie**  
809 SE Pine Street  
Roseburg, Oregon 97470  
PHONE (541) 673-0166  
FAX (541) 440-9392  
email@ieengineering.com

PROJECT NO. 149-226  
DWG BY: DTM